

We Proudly Work with Warmboard



While we do not sell Warmboard directly, we are happy to design a system for the Warmboard application and provide all the necessary parts, including tubing, manifolds, and components. Warmboard combines a structural subfloor and a thermodynamically sophisticated radiant panel into an elegantly simple system. As a subfloor, Warmboard is installed and the tubing laid before other construction takes place, eliminating the need to design the system around interior walls.

- Nail or glue hardwood or carpet tack strips right to it
- Attach tile underlayment right over it
- Modular channel pattern automatically produces tubing layout
- Made with recycled aluminum, sustainable forestry products, and non-toxic chemicals
- Powerful conductivity means thick, luxurious carpets and rugs are not a problem

Join the conversation  

In The Loop is a publication for customers, distributors, contractors, and friends of Infloor Heating Systems; a division of Infloor Sales & Service, Buena Vista, CO. www.infloor.com.

Understanding Hydronic Heating Options

Hydronic (liquid-based) radiant heating systems are the most popular systems we provide. They are ideal for large areas, entire homes and buildings, new construction, and snowmelt systems for outdoor use. These systems use little electricity, which is a benefit for homes in areas with high electricity prices or are off the power grid.

Hydronic radiant heating works by running warm water through durable PEX or PERT tubing that is installed in the floor and is heated by a boiler, water heater, or additional 'green'

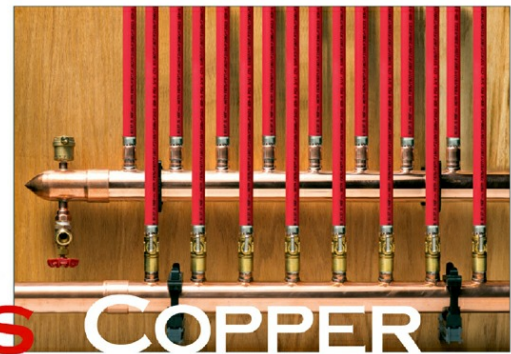
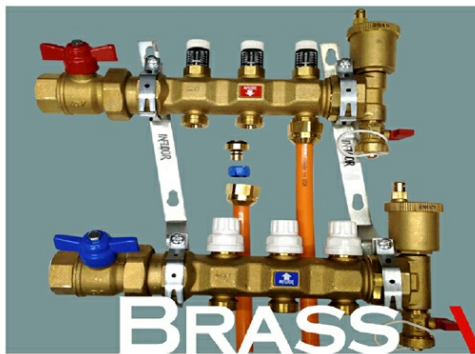
options such as solar or geothermal solutions for increased energy savings. A boiler can run on natural gas, propane, heating oil, electricity, or wood.

We offer four installation options for hydronic heating: Infloorboard, Concrete, Thermo-floor, and Radiant Trak. Each of these installation methods offer unique advantages and features. So which option is best for your project?

Infloorboard

Infloorboard is our premier thermal mass product for hydronic radiant

Webinar 9/29: Brass vs. Copper Manifolds



BRASS VS COPPER

Which Manifold is Right for Your Project?

WEBINAR - September 29, 2016

8:45 - 9:15 AM (CT)

Register Today!

Understanding Hydronic Heating Options Continued

heating applications with existing concrete slabs or where gypcrete (Therma-Floor) cannot be used. The low-profile, lightweight 3-panel system was designed with the installer and end-user in mind, with more efficiency and responsiveness, and is compatible with standard construction practices. It is ideal for new construction and remodeling alike.

Concrete

Embedding a radiant heating system into a concrete slab is one of the most effective ways to install it and most energy-efficient, being that concrete is a great thermal mass. This is the best choice for new construction and areas receiving new slabs.

Therma-Floor (Gypcrete)

One of our most common and effective installation applications is Therma-Floor, commonly known as a gypcrete. The gypsum underlayment is designed to pour over tubing, encasing the tubes in crack resistant, noncombustible gypsum, acting as the thermal mass. Therma-Floor systems can be used in many different

situations, because it can be installed on top of subfloors and concrete slabs, whether existing or new.

Its special formula resists breakdown up to 150°F (66°C). And because it's poured only 1-1/4" (32 mm) thick, the heating system is more responsive and more comfortable. As a "green" building material, Therma-Floor is an ideal solution for sustainable building projects.

Radiant Trak

Radiant Trak is the ultimate product for **under-floor** radiant heating applications, providing an alternative installation to slab, gypcrete, or Infloorboard. This type of installation is most commonly found in retrofit applications.

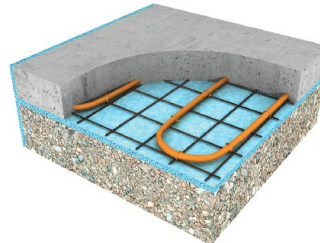
It works by attaching high-quality aluminum plates between the joist spaces on the underside of the subfloor, which tubing snaps into, providing a heat transfer between the plates and the subfloor, warming the entire area. Radiant Trak is perfect for older homes or remodel projects, and can be utilized for floor warming or primary space heating.



Gypcrete



Infloorboard



Concrete



RadiantTrak

Webinar 9/29: Brass vs. Copper Manifolds

Have you ever wondered about the difference between Brass and Copper manifolds, and which one is best for which projects? Then don't miss our free, upcoming Webinar on Thursday, September 29 on this very topic!

Hosted by our friends at **Enertech Global**, we are thrilled to be presenting a **webinar on Brass vs. Copper manifolds**, exploring both of these quality products, and which one is right for your project, making your future decisions on this topic much easier. The short, interactive webinar will be 30 minutes of great information on these

two types of manifolds, which you can enjoy right from your desk, or anywhere you have internet access. Join us, and learn all about each of these manifolds. We will cover what applications they are best suited for, and outline the steps you can take to determine which one is best for your project.

Mark your calendar for **September 29 from 8:45 - 9:15 am (CT)**, and **register** for our FREE webinar on our website at www.infloor.com/news.