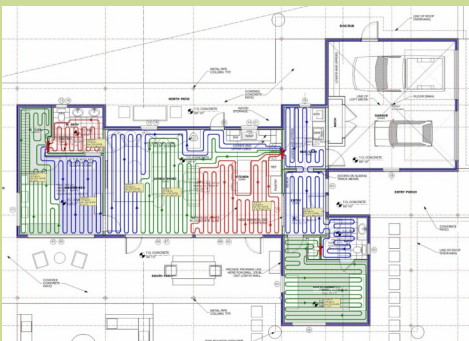


July 2016

IN THE LOOP

Get Loop Layout Designs with Infloor Heating Systems

Did you know we provide a Loop Layout Design specific for your project, complete with materials list, with every full radiant heating system we sell? Our original Loop Layout Designs are one of the secrets to our success! Our team has some of the best experts in the industry designing your system and blueprint together for the absolute best product and results. And we have the know-how to answer any questions about our products, designs, and installations. We can also guide you on the best parts and systems to go with. We are just a call or email away.



Join the conversation



In The Loop is a publication for customers, distributors, contractors, and friends of Infloor Heating Systems; a division of Infloor Sales & Service, Buena Vista, CO. www.infloor.com.

The Unexpected Helper in the Fight to Save Lives

There is a silent and invisible assistant at the ground floor in the fight to save lives. And it's one of the most unlikely, and perhaps least recognized of technological helpers. It's radiant heating.

How is that possible you ask? The answer lies in one of radiant heating's many useful applications, the snowmelt system. This automated application is most known for keeping driveways and parking lots free of snow and ice accumulation, but it can be installed in

any paved surface, including trauma unit helipads.

When every second counts, ensuring the helipad is free of snow and ice at all times is paramount to the efforts of emergency personnel. One example is WellSpan York Hospital located in York, PA. Their new, state-of-the-art helipad is part of the hospital's ongoing \$50 million overhaul of its emergency department, enhancing the hospital's ability to provide advanced, life-saving

continue reading on next page

Rep. Spotlight: CSM Group



We are pleased to welcome CSM Group (Cayias Sales and Marketing) to the Infloor family of Manufacturer's Representatives. CSM Group is a premier manufacturer's representative promoting quality products for commercial and residential plumbing, HVAC, irrigation, and PVF, with honesty and integrity. They will be representing Infloor Heating Systems in Utah, Wyoming, and Montana.

"The fact that we are in a mountain territory where this product is widely used, we felt that [Infloor] offers a great product with a home grown feel, just like

our company," said Sam Cayias, president of CSM Group. "We are looking forward to broadening our portfolio and giving our customers a great product with a personal touch."

Located in West Valley City, UT, CSM Group was established in 2002 by Sam Cayias, who has been in the plumbing supply business since 1986. From 1992 - 2002 he worked the rep. side of the business until opening CSM Group. We encourage you to learn more at www.csm-group.net.

The Unexpected Helper in the Fight to Save Lives Continued

specialty care to the region's sickest and most seriously injured patients.

The new helipad measures 7,200 square feet - 3,000 square feet larger than the hospital's old helipad - and stands 34 feet tall. The expanded size of the helipad will allow for larger helicopters with more patient capacity to land at the hospital campus. Previously, larger aircraft had to land at the hospital's alternate helipad less than a mile from the campus, and an ambulance would then transport the patients from the helipad to the hospital.

The new helipad features an automatic snowmelt system, with 12,000 feet of snowmelt tubing installed beneath the surface to keep ice and snow from accumulating on the pad, making maintenance during the winter months much easier.

WellSpan York Hospital is designated as a Level I Regional Resource Trauma Center, the only one of its kind, serving York, Adams, Lancaster, and Franklin counties in Pennsylvania. Last year, the hospital treated more than 2,000 trauma patients - including 190 who were transported via helicopter - for serious and often life-threatening injuries suffered as a result of automobile accidents, gunshot wounds, falls, and other events.

"With this new helipad, WellSpan York Hospital is reinforcing its commitment to provide safe, fast, and exceptional care to trauma patients in our region," said Keith Noll, president of WellSpan York Hospital and senior vice president of WellSpan Health. "In trauma care, every second counts, and this helipad will enable us to provide even quicker care to our most seriously injured patients."

What else can radiant heating do? Stay tuned to find out.



*Information provided by WellSpan York Hospital and Fox43 Media.
Pictures above from WellSpan York Hospital.*

Interested In Learning More About Snowmelt Systems?

Infloor Heating Systems is a premier provider of snowmelt systems, which can be installed in concrete, asphalt, and underpavers. We can design your system specific to your project's needs, and provide a loop layout design with complete materials list. We have everything you need for the best radiant heating systems, indoors and out. Contact us today to learn more and get started.

